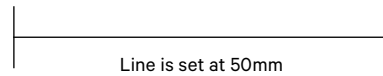


# RING SIZE GUIDE

## Scale check

Before using the size guide, make sure you have printed it at 100%. You can check the size by placing your ruler on the line and measuring 50mm (5cm).



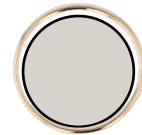
## Using the size guide

1. Select a ring that fits the intended finger.
2. Place the ring and match the INSIDE circle circumference with the closest size.
3. Make sure you take your time and be as accurate as possible.
4. If in between sizes, select the larger size.

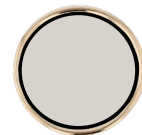
Please note that this is a guide only and based on SARAH & SEBASTIAN's sizing (Australia). We recommend purchasing a ring sizer if unsure. If you require any assistance, please contact [info@sarahandsebastian.com](mailto:info@sarahandsebastian.com)



Select smaller size



Select larger size



Correct ring size

## Bespoke

Our rings are available in SARAH & SEBASTIAN's standard sizing 48mm, 52mm & 56mm (women) and 56mm, 60mm & 64mm (men). If you require a bespoke size, we offer this service on a selected range only. A bespoke fee can be requested through the bespoke button on the selected rings product page.

W 1/2 65.78mm	S 1/2 60.66mm	O 1/2 54.76mm	K 49.64mm	F 44.14mm
X 66.54mm	T 61.29mm	P 56mm	K 1/2 50.27mm	F 1/2 44.45mm
X 1/2 66.92mm	T 1/2 62.33mm	P 1/2 56.45mm	L 50.58mm	G 45.11mm
Y 67.51mm	U 62.89mm	Q 57.15mm	L 1/2 51.55mm	G 1/2 45.74mm
Y 1/2 68.14mm	U 1/2 63.46mm	Q 1/2 57.65mm	M 52mm	H 46.02mm
Z 68.77mm	V 64mm	R 58.47mm	M 1/2 52.50mm	H 1/2 46.68mm
Z 1/2 69.43	V 1/2 64.97mm	R 1/2 59.06mm	N 53.16mm	I 47.27mm
	W 65.22mm	S 60mm	N 1/2 53.82mm	I 1/2 48mm
			O 54.51mm	J 48.38mm
				J 1/2 49.32mm

# RING SIZE GUIDE

INSIDE CIRCUMFERENCE (MM)	UK/AUSTRALIA	US/CANADA	EUROPEAN
37.54	A	1/2	
38.26	A 1/2	3/4	-
38.86	B	1	-
39.58	B 1/2	1 1/4	-
40.15	C	1 1/2	-
40.84	C 1/2	1 3/4	-
41.50	D	2	41 1/2
42.13	D 1/2	2 1/4	-
42.76	E	2 1/2	42 1/2
43.45	E 1/2	2 3/4	-
44.14	F	3	44
44.45	F 1/2	3 1/8	-
45.11	G	3 3/8	45 1/4
45.74	G 1/2	3 5/8	-
46.02	H	3 3/4	46 1/2
46.68	H 1/2	4	-
47.25	I	4 1/4	47 3/4
48 (47.97)	I 1/2	4 1/2	
48.38	J	4 5/8	49
49.32	J 1/2	5	-
49.64	K	5 1/8	50
50.27	K 1/2	5 3/8	-
50.58	L	5 1/2	51 3/4
51.55	L 1/2	5 7/8	-
52 (51.87)	M	6	52 3/4
52.50	M 1/2	6 1/4	-
53.16	N	6 1/2	54
53.82	N 1/2	6 3/4	-
54.51	O	7	55 1/4
54.82	O 1/2	7 1/4	-

INSIDE CIRCUMFERENCE (MM)	UK/AUSTRALIA	US/CANADA	EUROPEAN
56 (55.76)	P	7 1/2	56 1/2
56.45	P 1/2	7 3/4	-
57.15	Q	8	57 3/4
57.65	Q 1/2	8 1/4	-
58.47	R	8 5/8	59
59.06	R 1/2	8 7/8	-
60	S	9 1/8	60 1/4
60.66	S 1/2	9 3/8	-
61.29	T	9 5/8	61 1/2
62.33	T 1/2	10	-
62.89	U	10 1/4	62 3/4
63.46	U 1/2	10 1/2	-
64 (63.84)	V	10 5/8	63
64.97	V 1/2	11	-
65.22	W	11 1/8	65
65.78	W 1/2	11 3/8	-
66.54	X	11 5/8	66 1/4
66.92	X 1/2	11 7/8	-
67.51	Y	12	67 1/2
68.14	Y 1/2	12 1/4	-
68.77	Z	12 1/2	68 3/4
69.43	Z 1/2	12 3/4	-

Use the table to find your ring size. The most accurate sizing is determined by measuring the inner diameter of your ring in millimetres below. Please contact [info@sarahandsebastian.com](mailto:info@sarahandsebastian.com) if you require assistance.